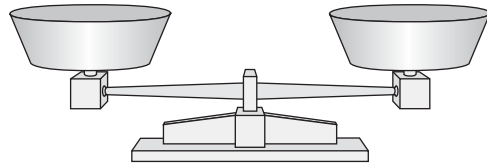


LESSON
2·2

Pan-Balance Problems

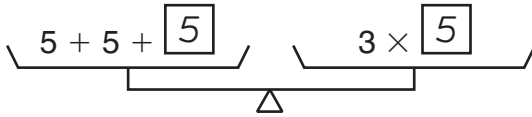


A **pan balance** is used to weigh objects. When the weight of the objects in one pan is the same as the weight of the objects in the other pan, the pans are in perfect balance.



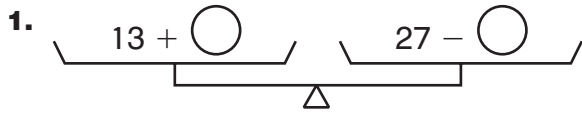
In each figure below, the pans hold **equivalent names** for a number. The pans are in perfect balance. Fill in the missing numbers. Write the name for the pan balance.

Example:



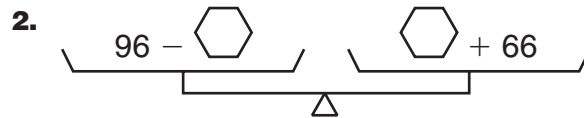
a. $\square = 5$

b. Pan-balance name 15



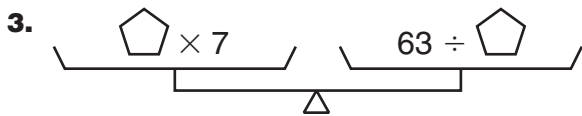
a. $\bigcirc = \underline{\hspace{2cm}}$

b. Pan-balance name



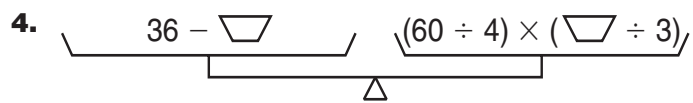
a. $\hexagon = \underline{\hspace{2cm}}$

b. Pan-balance name



a. $\pentagon = \underline{\hspace{2cm}}$

b. Pan-balance name



a. $\trapezoid = \underline{\hspace{2cm}}$

b. Pan-balance name